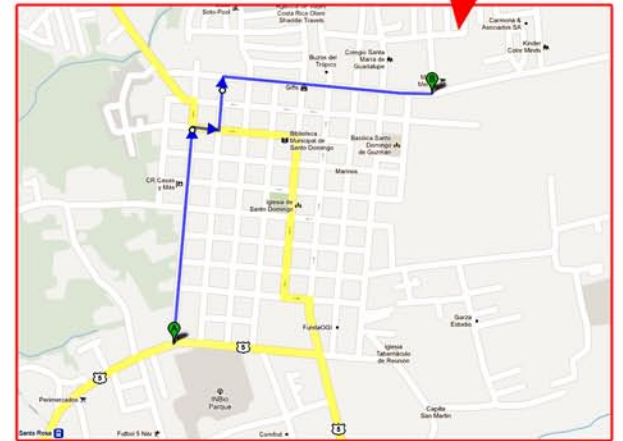
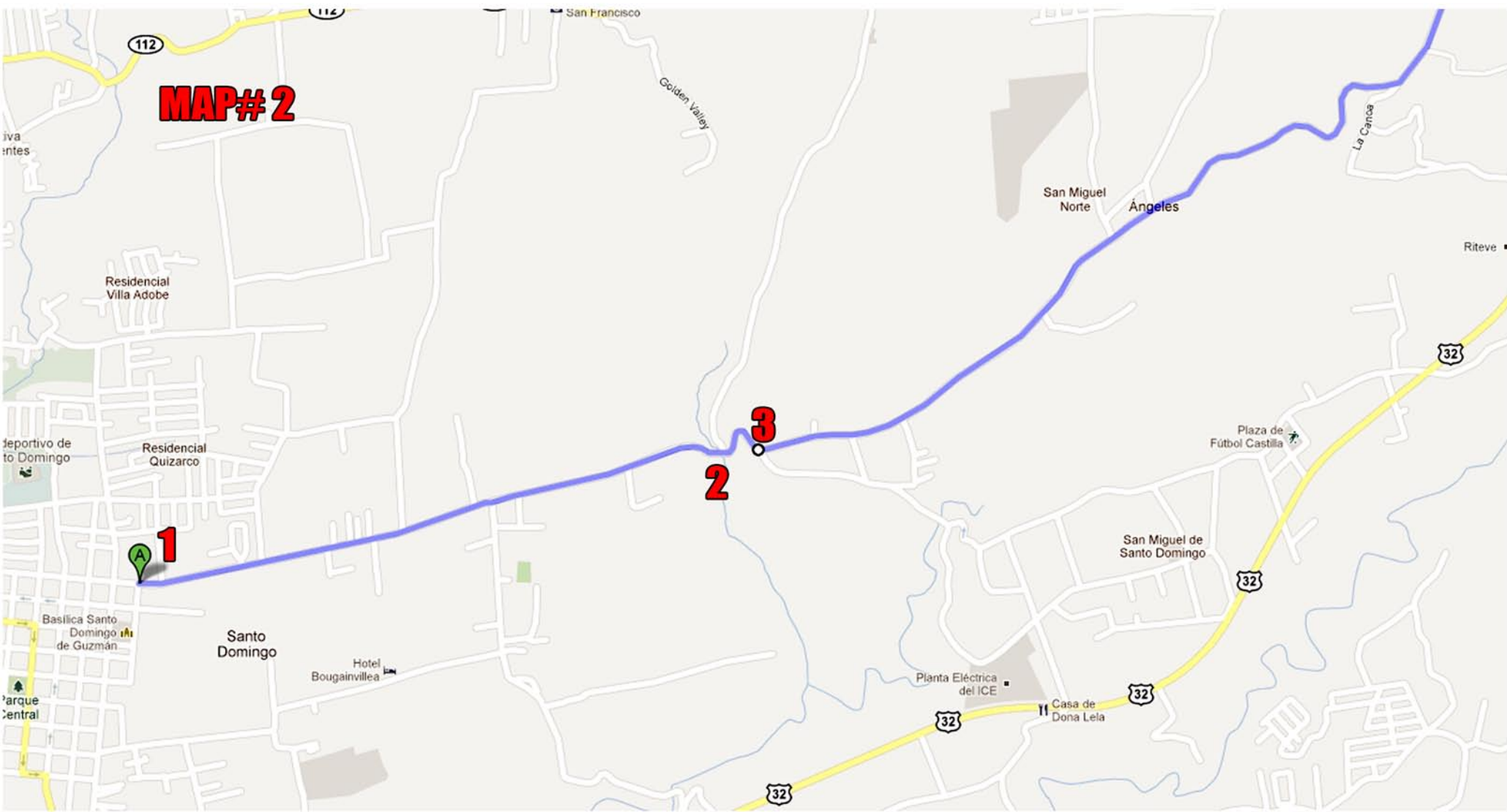


MAP #1

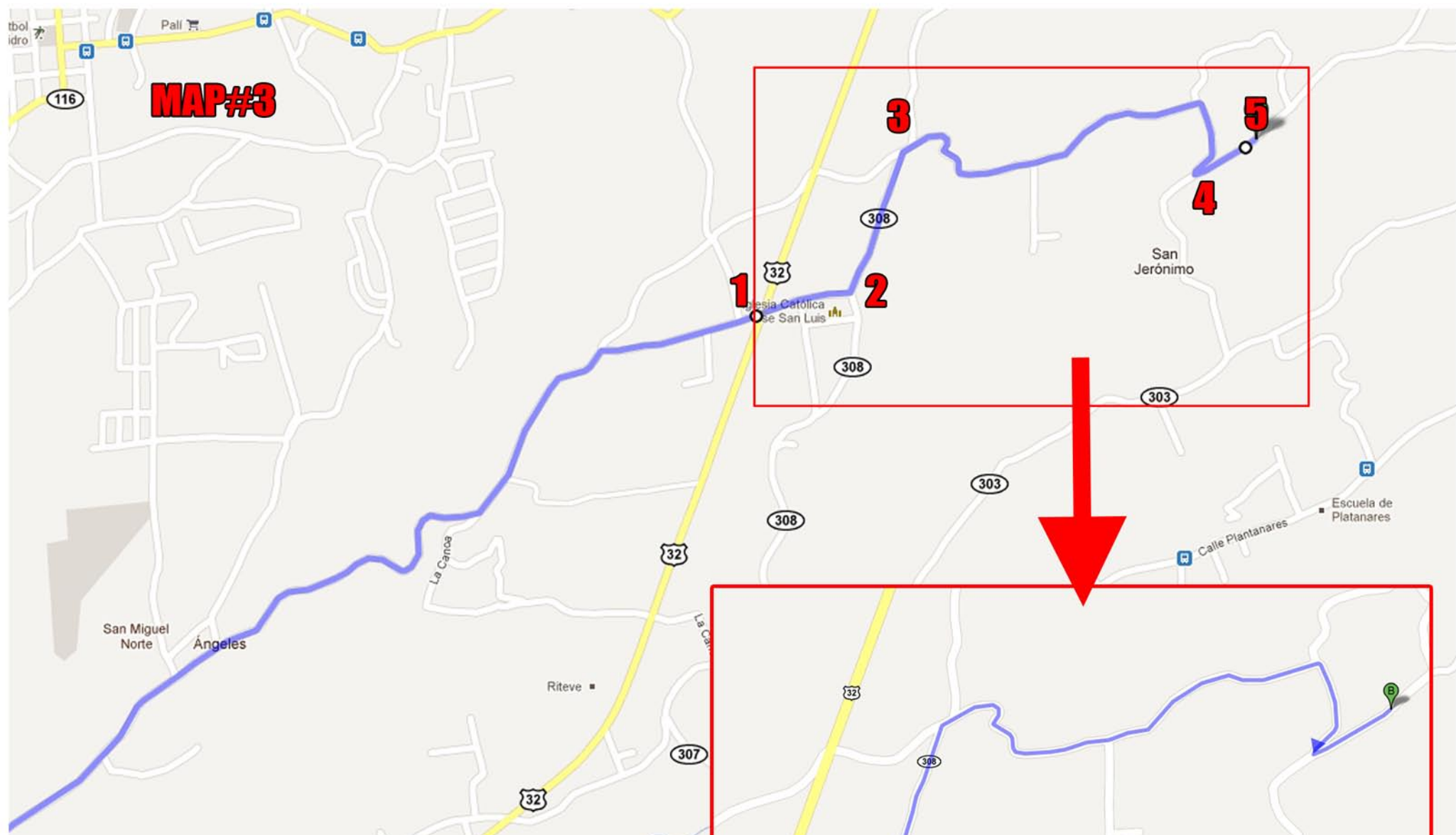
- 1** AIRPORT GET ON HIGHWAY 1 TO SAN JOSE GO FOR 8.5 KM (7 TO 9 MINUTES) LOOK IN YOUR SPEEDOMETER
- 2** BEFORE THIRD OVERPASS BRIDGE GET OUT OF HIGHWAY TO YOUR RIGHT
- 3** AT TEXACO GAS STATION TURN RIGHT GO FOR 3.3 KM AND TURN LEFT
- 4** AT 500 METERS YOU WILL FIND THE PEUGEOT CAR DEALER TURN RIGHT
- 5** GO FOR 2.3 KM AND BEFORE INBIO PARK TURN LEFT





MAP# 2

- 1** GO FOR 2.4 KM TO ONE LANE BRIDGE
- 2** CROSS THE ONE LANE BRIDGE A STEEP HILL FOLLOWS AT THE TOP OF THE CURVE HILL TURN LEFT (NICE NEW ROAD)
- 3** GO LEFT AND FOLLOW THIS ROAD FOR 4.8 KM UNTIL YOU GET TO AND CROSS ROUTE 32



- 1** CROSS ROUTE 32 GO UP A SMALL HILL FOR 100 METERS PASS BY THE SOCCER FIELD
- 2** TURN LEFT AND GO FOR 550 METERS AT YOUR RIGHT YOU WILL SEE THE LAS JUNTAS BAR
- 3** CONTINUE TO YOUR RIGHT YOU WILL START TO GO DOWNHILL PASS A SMALL BRIDGE AND YOU WILL START TO GO UP HILL GO FOR 1.6 KM
- 4** TURN SHARP LEFT GO FOR 300 METERS UNTIL YOU SEE A RED METAL BASKET IT WILL HAVE OUR LOGO PAINTED ON IT THAT IS OUR ENTRANCE YOU MADE IT TURN LEFT AND GO TO THE END A GREAT ROOM IS WAITING FOR YOU.



PAINTED ON IT THAT IS OUR ENTRANCE YOU MADE IT